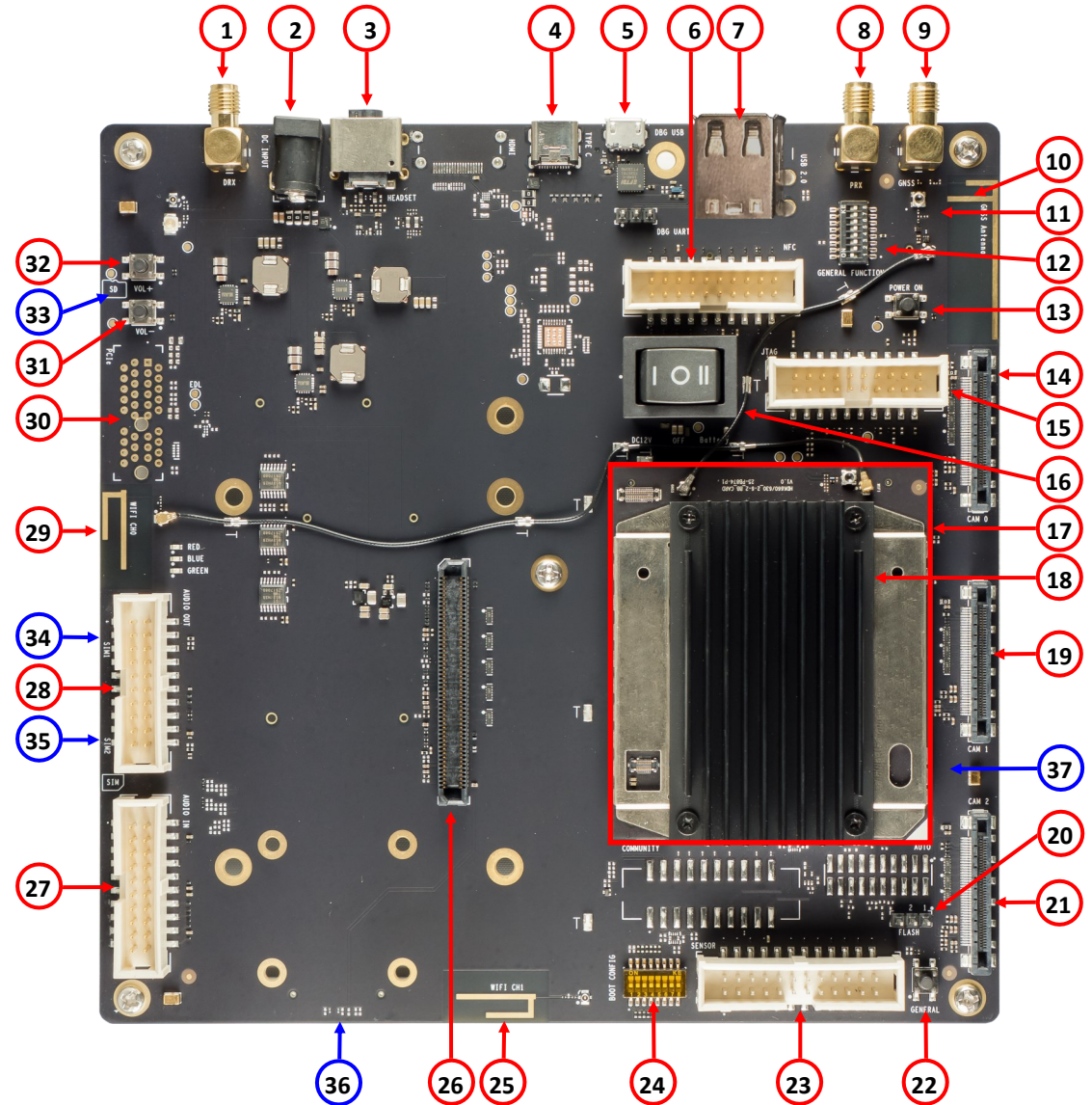


Package Contents

1. Open-Q™ 660 processor board with SDA660 processor
2. Carrier board
3. 12V AC power adapter
4. Charger with USB cable

- | | |
|---------------------------------------|---|
| 1. DRx SMA | 23. Sensor header |
| 2. 12V DC jack | 24. Boot configuration switches |
| 3. ANC 3.5mm Headset Jack | 25. Wi-Fi Antenna 1 |
| 4. USB 3.1 type C | 26. Connector for optional LCD |
| 5. UART Debug over Micro B | 27. Audio in header (analog + digital) |
| 6. NFC Expansion Header | 28. Audio out header (analog + digital) |
| 7. USB 2.0 | 29. Wi-Fi Antenna 2 |
| 8. PRx SMA | 30. PCI Express (footprint only) |
| 9. GPS SMA | 31. Volume - button |
| 10. GPS antenna | 32. Volume + button |
| 11. RCM | 33. Micro SD slot* |
| 12. General function switches | 34. SIM 1 slot* |
| 13. Power button | 35. SIM 2 slot* |
| 14. MIPI CSI0 connector (front cam 1) | 36. Mini PCI (footprint only) |
| 15. JTAG Header | 37. Battery* (optional) |
| 16. Power switch (12V DC or battery) | |
| 17. Processor board | |
| 18. Heatsink | |
| 19. MIPI CSI1 connector (front cam 2) | |
| 20. Flash LED expansion | |
| 21. MIPI CSI2 connector (back cam 3) | |
| 22. General button | |
- * on bottom side





Open-Q™ 660 HDK Development Kit Quick Start Guide



Development Kit Setup

1. Remove the development kit board carefully from the anti static bag at a static-safe work-station

2. Select “I” on the Power switch, connect the 12V Power Adapter into the DC jack then press the power button once for the board to boot

3. Documentation and software

To access the documentation (schematics, user guides, programming guides...), platform BSP software and much more, please register at:

<http://support.intrinsyc.com>

Sign in Register

Intrinsic Support Server

Login: myname@mycompany.com
Email address

Password: *****

Forgot password Login >

First-time user please click here to register

Development Kit Support

Should you require more information or assistance, you can contact us at:

<https://www.intrinsyc.com/contact-support>

Intrinsyc also provides technical information and videos on Snapdragon processors at:

<https://www.intrinsyc.com/resources>

Should you require additional technical support for your Development Kit you can easily purchase a block of technical support hours from the Intrinsyc store:

<http://shop.intrinsyc.com/collections/technical-support-packages>

Thank you for purchasing the Open-Q 660 HDK Development Kit

The Intrinsyc Team